

ROTARY VALVE

The rotary valve „HSBK“ is used for the continuous discharge or dosing of granular bulk materials with high capacities or voluminous products.



FUNCTION

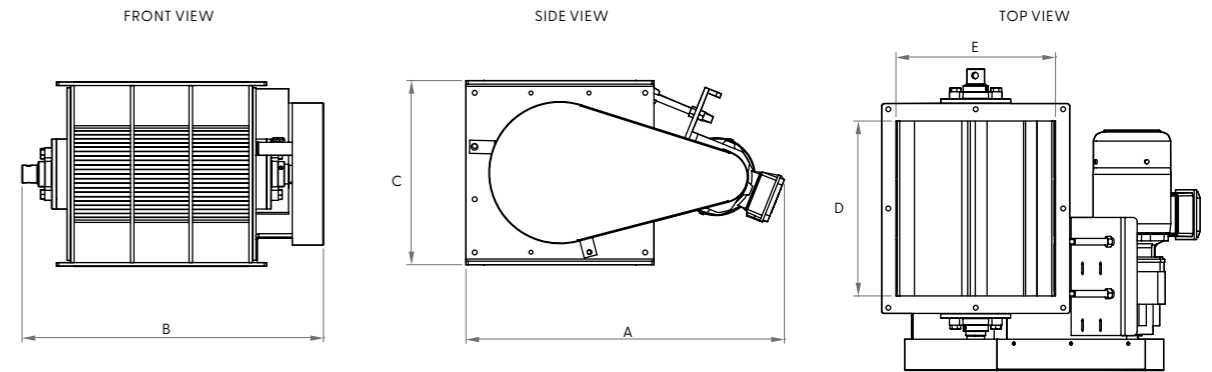
A rotor with radial ribs rotates in the cylindrical, sheet metal housing. The product falls into the chambers of rotor and is stored there for half a turn. The product then flows out of the chambers/ out of the rotary valve into the space below.

FEATURES

- > High tightness
- > Low-maintenance operation
- > Max. over/under pressure 0,5 bar
- > Suitable for use in potentially explosive areas (inside/outside; not suitable for decoupling explosions)

OPTIONS

- > Direct drive or chain drive
- > Rotation speed monitoring
- > Inlet and outlet hoppers
- > Custom painting (standard: RAL9003/ RAL3003)



TECHNICAL DATA

Type	Capacity per Rotation [dm³/rot.]	Capacity¹ [t/h]					Weight [kg]		Volume [m³]
		Wheat	Flour	Bran	Corn	Semolina	Net	Gross	
HSBK-22/27	11	10,4	7,6	4,8	11,0	6,2	56	81	0,3
HSBK-25/33	15	14,1	10,4	6,6	15,12	8,5	61	95	0,4
HSBK-35/40	26	24,6	18,0	11,5	26,2	14,7	66	104	0,5
HSBK-45/45	39	36,9	27,0	17,2	39,3	22,1	72	110	0,9
HSBK-50/50	48	45,4	33,3	21,17	48,4	27,2	90	125	1,1
HSBK-60/60	71	67,1	49,2	31,3	71,6	40,3	101	135	1,5

¹ Capacities are non-binding values, which are based on average product parameters. The Capacity may vary depending on product, humidity, and environmental conditions. Base: 35rpm, 70% filling.

DIMENSIONS (MM)

Model	A²	B²	C	D	E
HSBK-22/27	330	670	320	270	263
HSBK-25/33	550	700	320	330	263
HSBK-35/40	430	820	420	400	365
HSBK-45/45	800	800	525	450	465
HSBK-50/50	1.000	850	550	500	513
HSBK-60/60	1.100	950	650	600	613

² Dimensions may vary due to different types of motor.